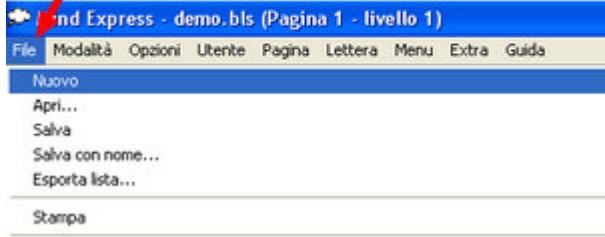


Mind Express - Tutorial di Base

Creare una Tabella

1 Seleziona File - Nuovo



2 Appare la finestra Tabella



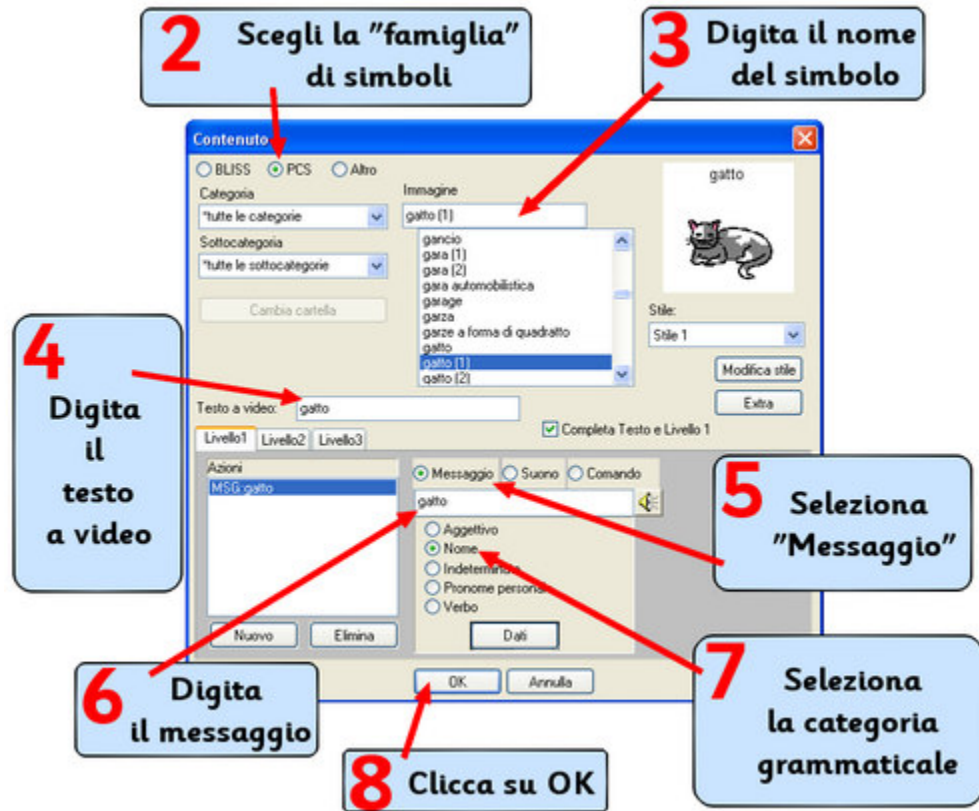
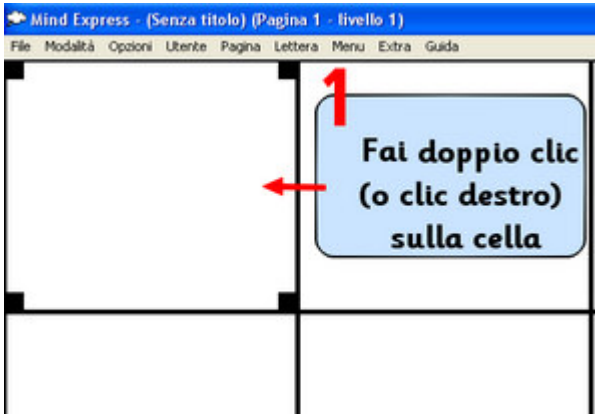
3 Seleziona il numero di celle (righe e colonne)

4 Fai clic su OK

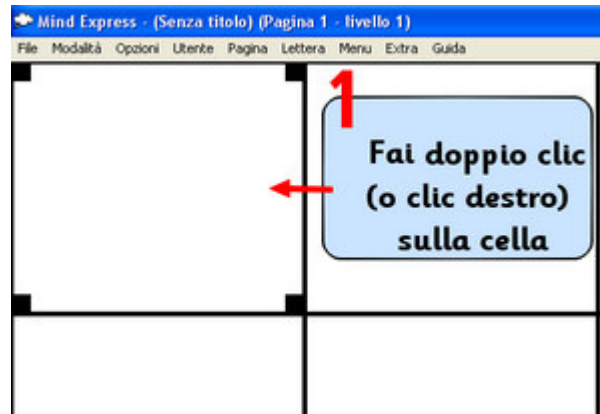
5 Ecco la prima pagina della tabella

A screenshot of the first page of the table created in Mind Express. The table is a grid with 8 columns and 3 rows. A red arrow points to the top-left corner of the table grid.

Riempire una Cella

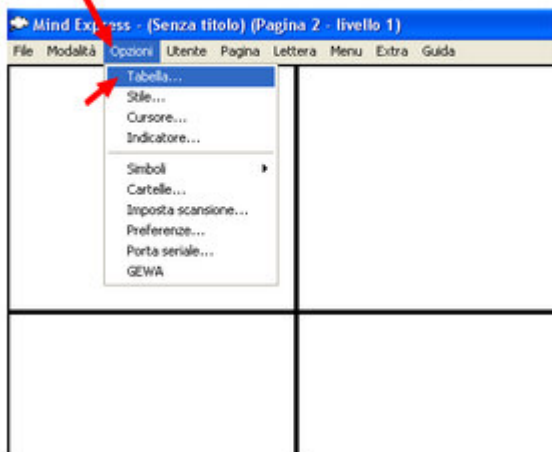


Riempire una Cella - Metodo Veloce



Creare una pagina nuova

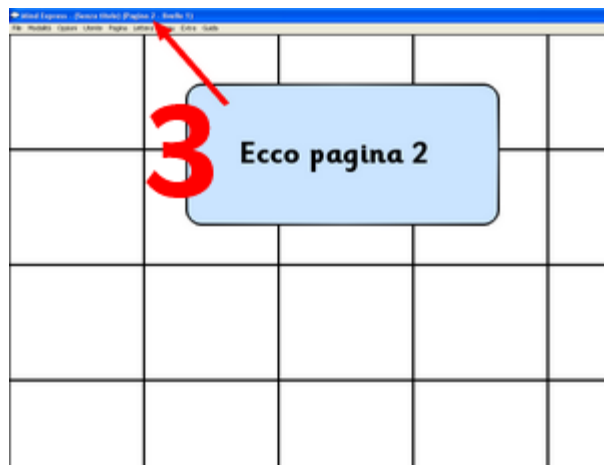
1 Seleziona Opzioni - Tabella



2 Clicca su "Nuova Pagina" e poi su OK



3 Ecco pagina 2



Collegare due pagine

